

[stub](#)

Building the UI V1.8 Board

OVI40 UI V1.7 Documents

UI V1.7 documents are provided for information only. Please primarily use the V1.8 documents for building the UI V1.8 board.

- [OVI40 UI V1.7 schematics](#)
- [UI V1.7 component placement - bottom layer](#)
- [UI V1.7 component placement - top layer](#)

Please note that the component placement docs are searchable pdf documents. During soldering they can be used to quickly find a component's location by entering the component reference (e.g. "R20") in pdf search. No need to be concerned to use the V1.7 component placement doc for assembling a V1.8 UI board - V1.7 and V1.8 are quite similar in this respect.


OVI40 UI V1.8 Documents

- [OVI40 UI V1.8 schematics](#)
- [OVI40 UI V1.8 BOM](#)
- [BOM created by Francois F4HTX with additional info](#)


OVI40 UI V1.8 Kit Contents

The kit contains UI V1.8 PCB, components in bags and packing list. The display is delivered as assembled and tested unit.




 Components in bags (Foto: DL8EBD)



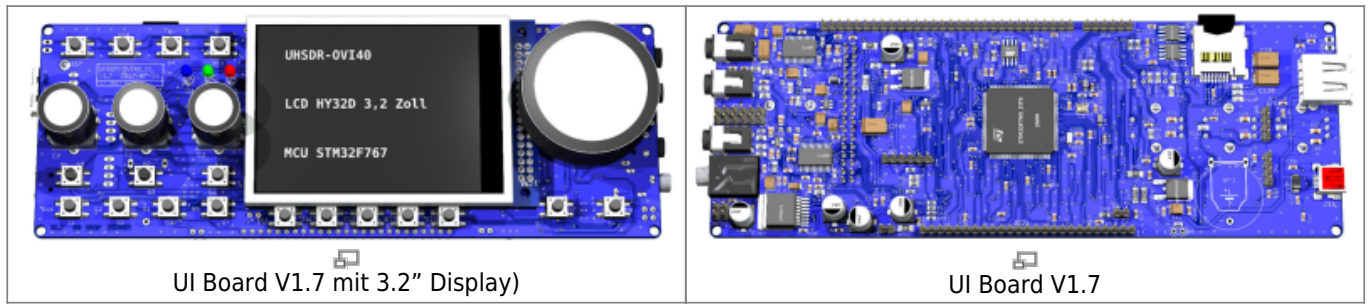
 UI V1.8 PCB (Foto: DL8EBD)



 Display board (Foto: DL8EBD)

Assembly and Soldering

The graphics below - UI V1.7 with 3.2" Display - give an impression on how the finished V1.8 UI board will look like:



UI Board V1.7 mit 3.2" Display)

UI Board V1.7

Please read Errata carefully

Make sure to read the [Errata](#) carefully **before starting assembly.**

=== IC Device Markings ===

The smaller ICs can be identified by device mark. The following device marks are used:

Typ	Device Mark	Schematic	Purpose
LP5907_Q1	LLVB	IC3	LDO 3.3 V
BAV70	A4	D5, D6	Diode
BC857B	3F	T3	Transistor
BAS85	Ring = Cathode	D7 - D9	Diode


MCU STM32 "Pin 1" marking

Please understand the correct orientation of STM32 MCU Pin 1. There are two markings on the IC. Please not the text printed on MCU to find the correct Pin 1: When reading the text Pin 1 is on bottom left corner.



Orientation of TXCO & MCU (photo DF9EH)



 Potential Shortcut (photo DF9EH)

Polarised capacitors

Please observe mounting orientation of tantalum and electrolytic capacitors. Markings on the capacitors are explained http://elektroniktutor.de/bauteilkunde/c_smdcod.html | [here](#)

Mounting locations of switches S7 and S8

Two different mounting locations are provided on the UI PCB for S7 and S8:

- “mCHF style”: S7 and S8 not in line with switches under LCD - they are mounted slightly higher
- “OVI40 style”: S7 and S8 are mounted in line with the function keys under the LCD

“In line” is the preferred mounting location for S7 and S8.

Modifications

Temporary Modification: Resistor in parallel to C94

Symptom: In stand-by the current drawn from back-up battery is excessively high. Work-around: Put resistor in parallel to C94. Start with a value of 56k - this seems to work in most cases. If board does not start increase value slightly.

Change brightness of LEDs

Helle LEDs: Mit den Bausatz-Vorwiderständen leuchten die LEDs sehr hell. DF9EH hat die Werte reduziert:

- R36 auf 22,6k (D1 grün)
- R37 auf 6,8k (D2 rot)
- R116 auf 6,8k (D3 blau)

From:

<https://amateurfunk-sulingen.de/wiki/> - Afu - Wiki des DARC OV Sulingen I40

Permanent link:

<https://amateurfunk-sulingen.de/wiki/doku.php?id=en:ovi40build:uiboardbuild&rev=1516895310>

Last update: **25.01.2018 15:48**

