

## Segger J-Link Introduction

Segger provides a probe - J-Link - that can be used for programming and debugging. For non-commercial use Segger offers the low priced [J-Link Edu](#) probe.

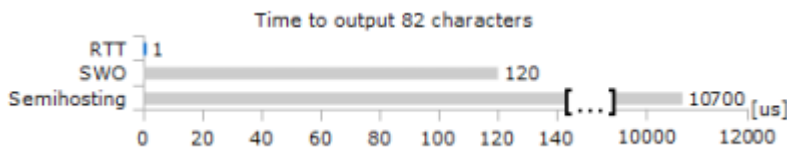
Segger supports the Cortex M7 SWV interface used on OVI40 UI and offers plug-ins for MCU eclipse.


For Debug output Segger offers an two options in MCU eclipse:

- TRACESWO output as defined by CORTEX M7. This requires a dedicated pin, currently used for M3 pushbutton switch
- [Segger Real Time Tracing \(RTT\)](#) with outputs debug messages in high speed via SWV debug lines (CLK and SWData). No need for an additional line to printout debug messages (as is the case with TRACESWO).

The J-Link makes use of the Cortex-M feature, which allows accessing the memory via the debug interface while the target is running. How this works in general is described [here](#).

The speed advantage of RTT - according to Segger data - is impressive:



 RTT speed comparison, from Segger web site [here](#)

## Install J-Link Software

### Debian SW Install

- Download .deb J-Link packages from [http://www.segger.com/download\\_jlink.html](http://www.segger.com/download_jlink.html)
- Download J-link .deb file, open terminal and go to download folder with terminal

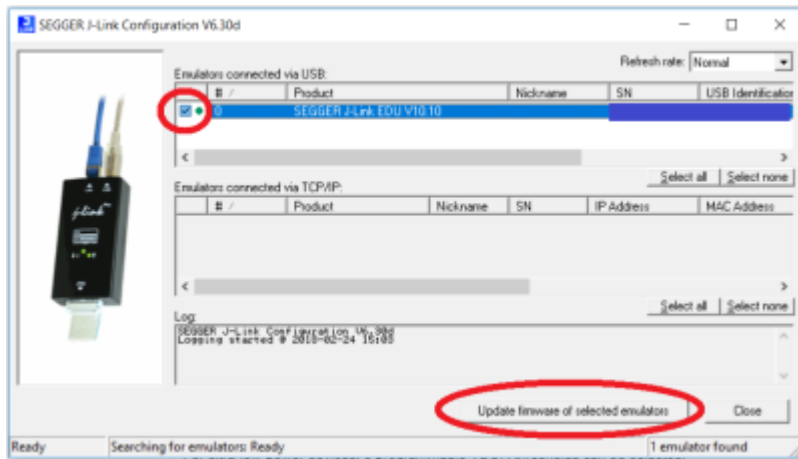
```
$ sudo dpkg -i nameofdebpackage.deb
```

### Windows SW Install

ToDo

## Segger J-Link adapter Firmware update

As part of the Segger J-Link SW pack the „J-Link Configurator“ utility. In Windows it can be started using the Windows start menu



Segger J-Link Configurator - Firmware update tool

## Install & Configure J-Link in GNU MCU Eclipse

See [here](#)

### Install Packs

For installing CMSIS packs see [here](#)

- Install the GNU MCU Eclipse Packs
- Download CMSIS packs from Keil, see
- Install local cop of STM32F7 and STM32H7

### J-Link and Eclipse

- Describe Eclipse settings (MCU, CMSIS, probe settings, ...) to use J-link probe on Eclipse with uHSDR

## Segger Real Time Terminal RTT

- See [here](#)
- See [AN08005](#) (although this is for Cortex-A / Cortex-R and not the Cortex-M used by OVI40 it still gives some insights)
- [Try RTT on UHSDR](#)

- is it really 100 times faster than SWO print and 10.000 times faster than semi-hosting? Segger says [here](#) that Cortex-M supports background memory access and that RTT will have no impact on Cortex-M execution speed

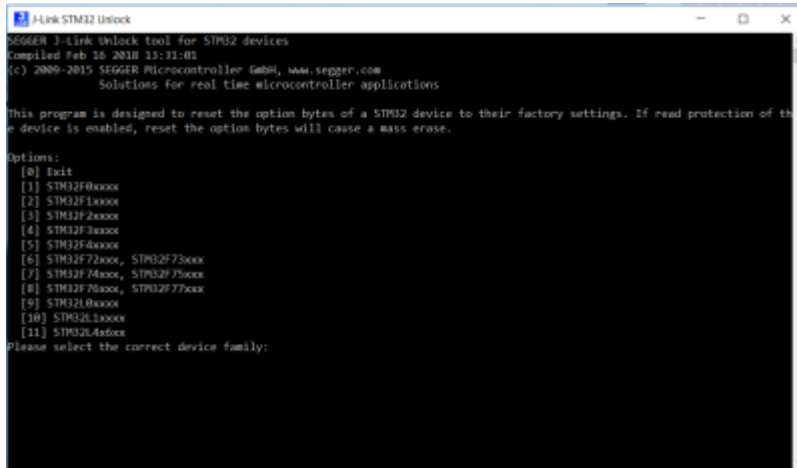
### RTT target code

The RTT target code is shipped as part of the J-Link Software and Documentation Pack which can be

downloaded [here](#). The RTT sources can be found in the J-Link software package under: Samples/RTT

## J-Link support for Option bytes and Lock / Unlock

Segger provides a „STM32 unlock“ utility as part of the standard J-Link SW pack. The tool can be started in Windows using the „start“ menu and resets all values to factory default:



```
J-Link STM32 Unlock
SEGGER J-Link Unlock tool for STM32 devices
Compiled Feb 16 2018 13:11:03
(c) 2009-2015 SEGGER Microcontroller GmbH, www.segger.com
Solutions for real time microcontroller applications

This program is designed to reset the option bytes of a STM32 device to their factory settings. If read protection of the
device is enabled, reset the option bytes will cause a mass erase.

Options:
[0] Exit
[1] STM32F0xxxx
[2] STM32F1xxxx
[3] STM32F2xxxx
[4] STM32F3xxxx
[5] STM32F4xxxx
[6] STM32F72xxx, STM32F73xxx
[7] STM32F74xxx, STM32F75xxx
[8] STM32F76xxx, STM32F77xxx
[9] STM32L0xxxx
[10] STM32L1xxxx
[11] STM32L4xxxx

Please select the correct device family:
```

Segger J-Link STM32 unlock utility

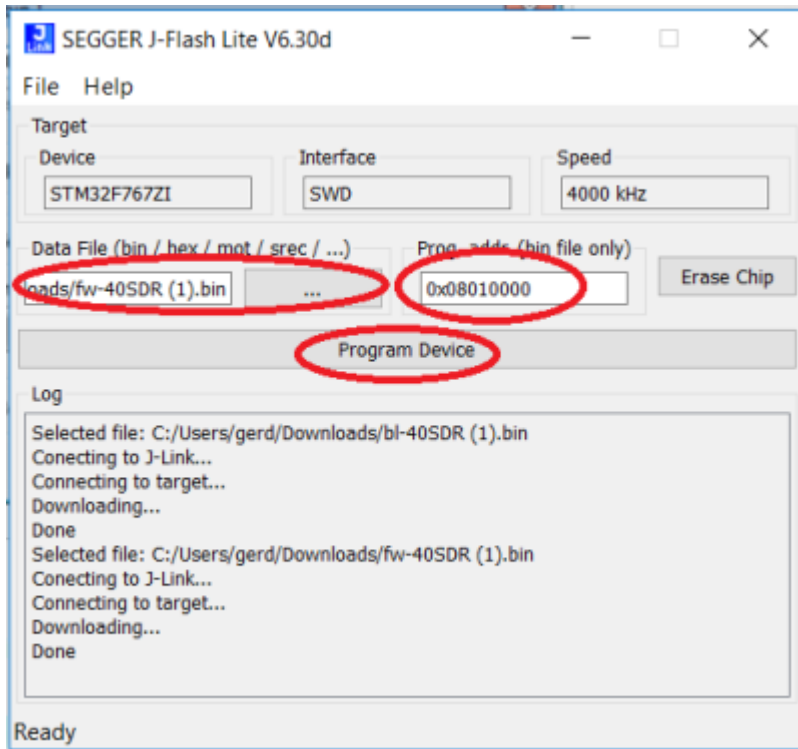
**Note:** The unlock utility resets the brown out reset (BOR) to „level 0“, equalling about 1.7 Volt.

Further reading:

- Check Option Byte support on J-Link, see [here](#) and [here](#) for a starting point.
- See [here](#) and [here](#)
- See 3.12.2 J-Link STM32 Unlock (Command line tool) in [J-Link User Guide](#)
- J-Link adapter seems to support option byte programming via J-link utility and/or J-Flash utility. This is indicated in previous versions of the J-Link or J-Flash user guides, but not in the current ones. See for example section 7.5.1.2 [here](#)
  - ToDo: Verify and try out

## Flashing MCU with Segger J-Link

As part of the Segger J-Link SW pack the flash utility „J-Link lite“ is provided. Start J-Flash using Windows „start“ button. **Note:** J-Flash does not support .dfu files. Use the UHSDR .bin files. Load bootloader at address 0x08000000 and load firmware at 0x08010000.



Segger J-Flash Lite tool

## Get to know J-Link: Converting on-board ST-Link On-Board into J-Link On-Board

- Certain STM32 development boards contain an ST-Link probe.
- For experiments with J-Link (not related to OVI40, but in order to get to know J-Link HW & SW) the on-board ST-Link board of those boards can be converted to J-Link, see [here](#).
- Compatible STM32 that can be re-flashed are listed [here](#).

### ToDo

- [https://www.segger.com/products/debug-probes/j-link/models/other-j-links/st-link-on-board/Checkout Segger STM32 support Wiki in general](https://www.segger.com/products/debug-probes/j-link/models/other-j-links/st-link-on-board/Checkout%20Segger%20STM32%20support%20Wiki%20in%20general)

### Further Reading

- [J-Link User Guide](#)
- [J-Flash User Guide](#)

From:  
<https://amateurfunk-sulingen.de/wiki/> - Afu - Wiki des DARC OV Sulingen I40

Permanent link:  
[https://amateurfunk-sulingen.de/wiki/doku.php?id=en:uhsdr\\_dev:segger\\_j\\_link&rev=1519717114](https://amateurfunk-sulingen.de/wiki/doku.php?id=en:uhsdr_dev:segger_j_link&rev=1519717114)

Last update: **27.02.2018 07:38**

